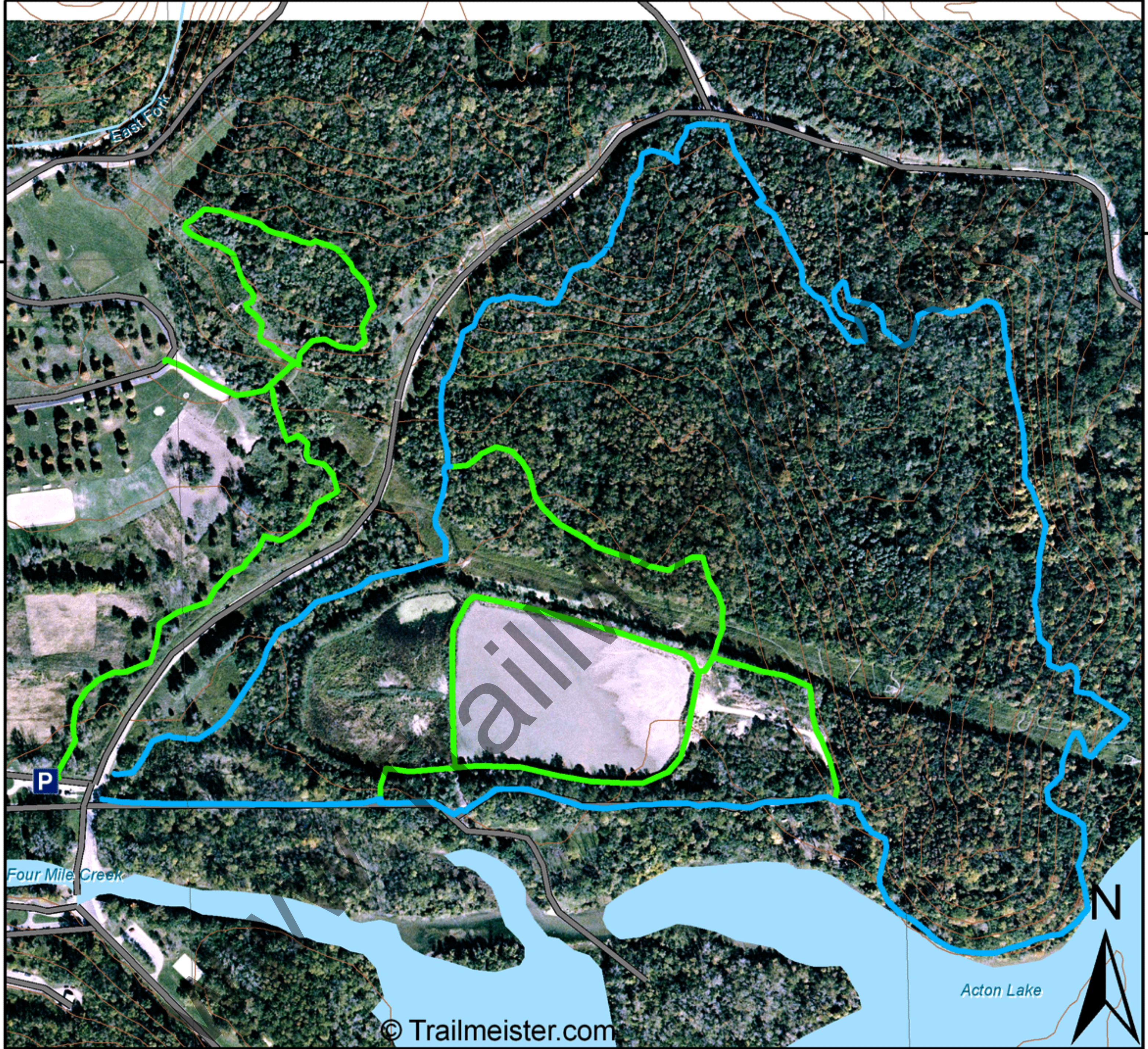


# Mountain Bike Trails

## Hueston Woods State Park

84°46'0"W

84°45'30"W



39°35'30"N

© Trailmeister.com

0 0.05 0.1 0.2 Miles

Mountain bikes and hikers only please on these trails.

**Trail Tips**

Keep your brain housing group intact by wearing a helmet when you're on the trail. In case you have an accident you'll be glad you did.

- Moderate Mtn Bike - 2.5 miles
- Easy Mtn Bike - 3 miles
- 10ft Contour

Two main mountain bike specific trails here totaling just over five miles. The Moderate trail is biking nirvana, lots of smooth, and fast, flowing singletrack above Acton lake. If you're near Hueston Woods you should make a point to visit these trails.

Visit [www.Trailmeister.com](http://www.Trailmeister.com) for more trail maps